

VLB525

User manual



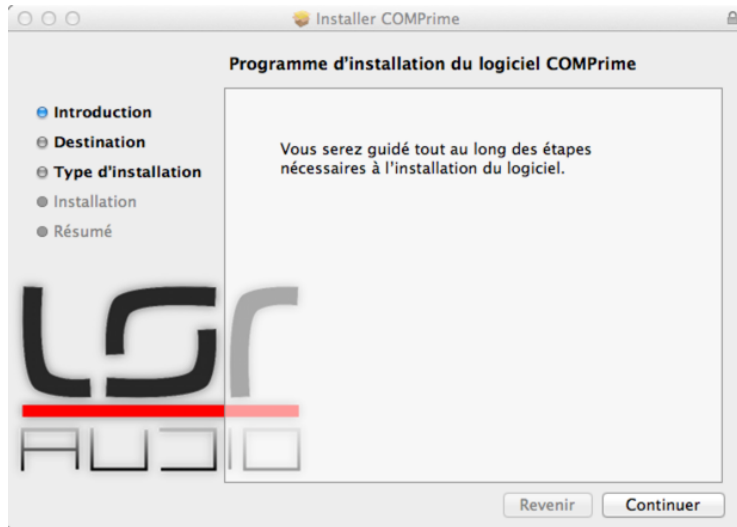
Introduction

Congratulation on choosing the LSR audio VLB525 classic FET compressor plug-in.

- Faithful hardware circuit emulation
- Peak detecting feedback compressor / limiter
- Adjustable threshold and output level
- Ceiling adjusts compression and compensates the level
- Gain reduction VU meter
- Compressor mode (2:1 ratio)
- Limiter mode (20:1 ratio)
- Off mode: signal goes through the output op amp and transformer directly without compression
- 4 release times: 0.1, 0.5, 2.0, 2.5 sec
- De-Ess function
- Adjustable attack
- Mono or stereo, with adjustable stereo link
- Adjustable internal simulation level
- Retina displays compatible

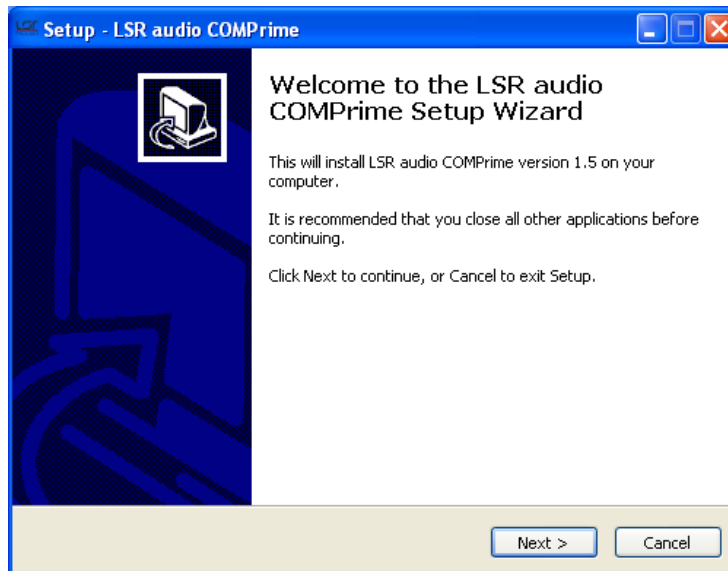
Installation

OSX



Open the “VLB525.pkg” file and follow the instructions. Select “custom install” at third step if you want to choose the plug-in formats that will be installed.

Windows



Execute the “VLB525Setup.exe” file, and follow the instructions. VST 32 bit and 64 bit will be installed in the same folder, in a package named VLB525.vst. This package is organised like this:

- + VLB525.vst
 - + Contents
 - + Resources
 - + Win32
 - + x64

Just remove “x64” folder to make the plugin 32 bit only or remove “Win32” folder to make it 64 bit only.

User interface

Overview



In



Defines the proportion of signal that is sent to the gain reduction circuit (threshold).

Out



Is a gain setting, to compensate the gain reduction (make-up gain).

Ceiling

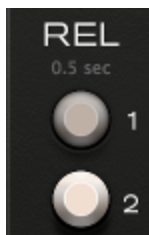


Increases the threshold and compensates the makeup level to keep a constant output level. The dynamics can be changed on the fly without changing the in / out settings.

- 0: no compression or level compensation
- ...
- 20: maximum compression and makeup level

It can be seen as a parallel compression mix setting, without the risk of phase problems.

Release



Four release time values are available:

- buttons off → 0.1 s
- 1 → 0.5 s
- 1 + 2 → 2 s
- 2 → 2.5 s

D-S



Adds an inverse energy curve to the side chain for anti-pop and de-esser effects.

Mode



Four modes are available:

- C: compression, with a 2:1 ratio
- L: limiter, with a 20:1 ratio
- OFF: gain reduction is bypassed but the output discrete op-amp and audio transformer are still active

Attack



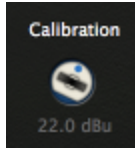
Allows to adjust the attack time. This feature is not available on the hardware 525. The “norm.” positions configures the normal attack time of the hardware.

Stereo link



When used on a stereo track, this defines how the left and right compressors are connected together. It goes from two independent compressors, to two compressors working on the same mixed track sidechain.

Calibration

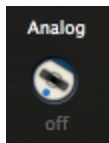


Calibration defines the mapping between the logical DBFS signal levels in the DAW, and the simulated voltage in the VLB525 virtual circuits.

If you want to compare the VLB525 plug-in with a 525 hardware compressor in a hardware insert, set the calibration to the maximum level of your interface line out.

ex: if your interface is calibrated to -18 dBFS = +4 dBu, you should use a level of +22 dBu (4 + 18).

Analog



Controls the analog noise floor and hum emulation.

- off : no noise and hum emulation
- 50 Hz : noise floor and 50 Hz (european) electric hum emulation
- 60 Hz : noise floor and 60 Hz (american) electric hum emulation

VU



The VU-meter can display the gain reduction of the compressor, in decibels. The needle speed is independent to the attack and release settings.

Technical data

Simplified diagram

